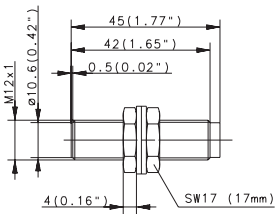
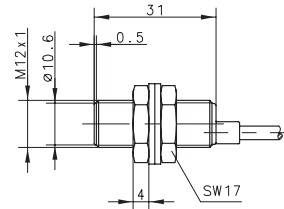
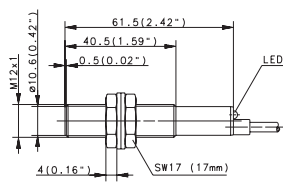
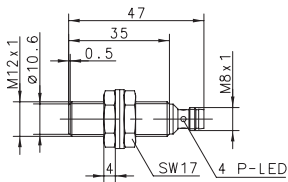


<b>M12</b> bündig 2 mm Stecker M8	bündig 2 mm Stecker M12	<b>M12</b> bündig 2 mm Kabel 2 m 4000 Hz	<b>M12</b> bündig 2 mm Kabel 2 m NAMUR
--	-------------------------------	--	--



<b>6502943008</b> KIB-M12PS/002-KLSM8V	<b>6502943006</b> KIB-M12PS/002-KS12V <b>6502743005</b> KIB-M12PÖ/002-KS12V	<b>6502903012</b> KIB-M12PS/002-KL2F				
				<b>6501624760</b> KIB-M12EA/002-2		

10–30 VDC	10–36 VDC	10–60 VDC	5–25 VDC
≤ 200 mA	≤ 200 mA	≤ 200 mA	–
800 Hz	800 Hz	4000 Hz	≤ 800 Hz
taktend	taktend	taktend	–
LED/–	–/–	LED/–	–/–

–25°C/+70°C	–25°C/+70°C	–25°C/+70°C	–25°C/+70°C
IP67	IP67	IP67	IP67
CuZn39Pb3	CuZn39Pb3	CuZn39Pb3	CuZn39Pb3
M8 x 1	M12 x 1	3 x 0,14 mm <sup>2</sup>	2 x 0,25 mm <sup>2</sup>

Ausführliche Datenblätter zu den Produkten finden Sie unter [www.bernstein.eu](http://www.bernstein.eu)

