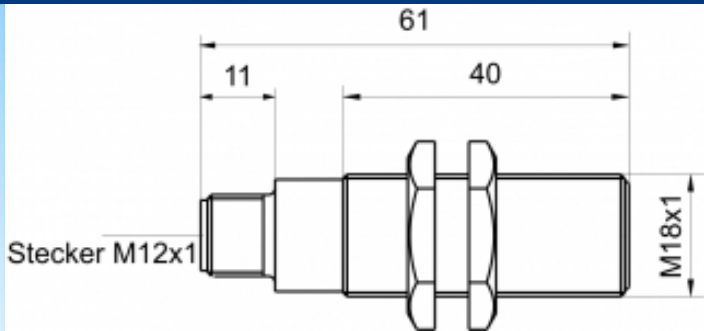
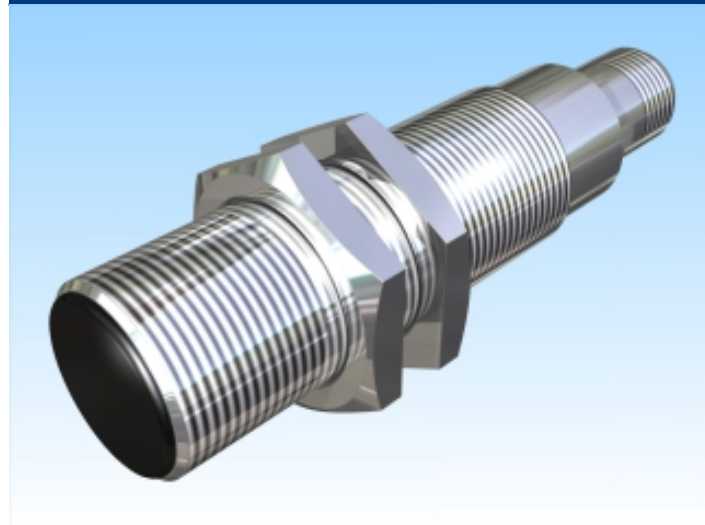


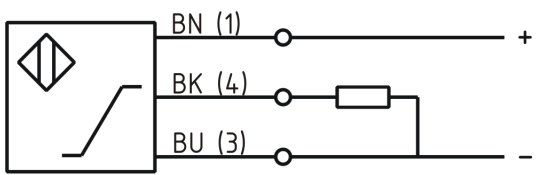


[Article Page](#)

Product Description **inductive sensor analogue**



Name	KJ5-M18MB61-ANI-V2
Order number	08317141765
Matchcode	9914-1765
Switching distance	5 mm
Mounting	 shielded
Switch type	 analog current
Signal Type	analog current
Connection	connector M12
Connection diagramm	



Dimension (in mm)	fine-pitch thread M18 x 61
-------------------	----------------------------

Technical Specification

Special features	Output Current 4 ... 20 mA
Operating voltage	11 - 35 VDC
Max. ripple	≤ 10 %
Max. load current	30 mA
No load current	≤ 10 mA
Switching frequency	400 Hz
Operating temperature	-25 ° C to 70 ° C
Temperature drift	+/-5 %
Repeat accuracy	≤ 1 %

Linearity	≤ 5 %
Analog output	Pulso_has1
Time delay	300 ms
Resolution	3,56 mA / mm
Short-circuit proof	yes
Reverse voltage protection	yes
Protection category	IP67
EMC-level	DIN EN 60947-5-7: 2004
Housing material	Brass, nickel plated
Material active face	PCB
Utilisation category	DC13
Contact material	CuSn
Contact surface material	NiAu
Contact holder	PA 6
Nominal operating voltage	24 V DC
Termination	Connector M12 4pin
Minimum Load Resistor	1 kOhm
FIT / MTTF acc. to SIEMENS 29500	79,07 / 1444y

Errors and omissions exceptet